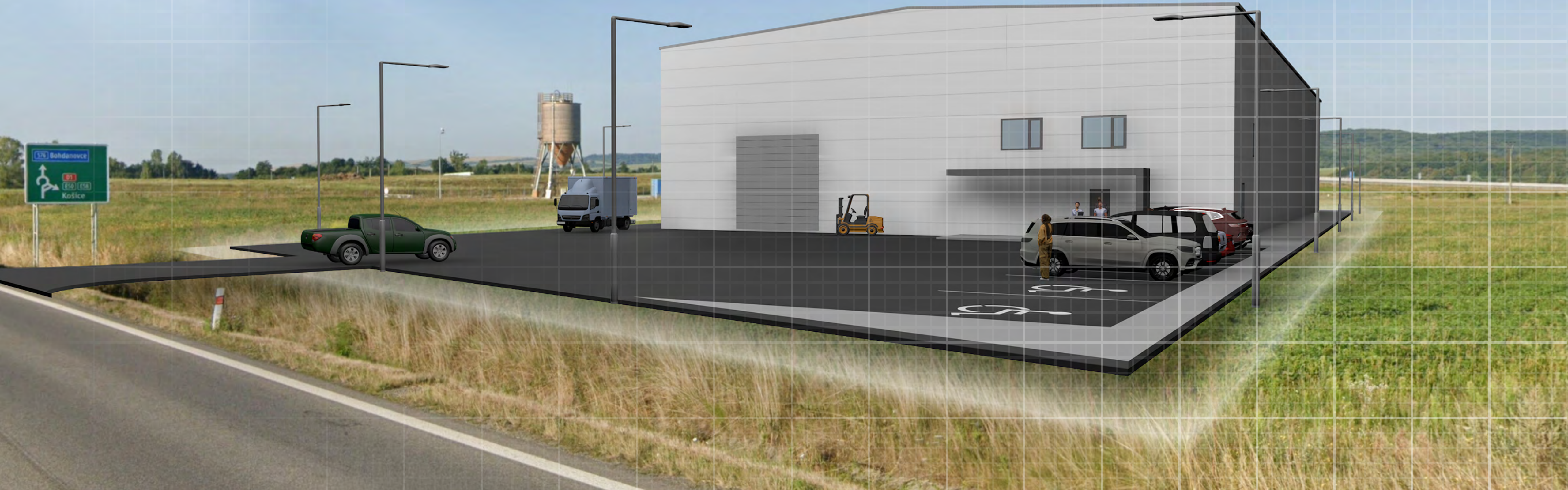


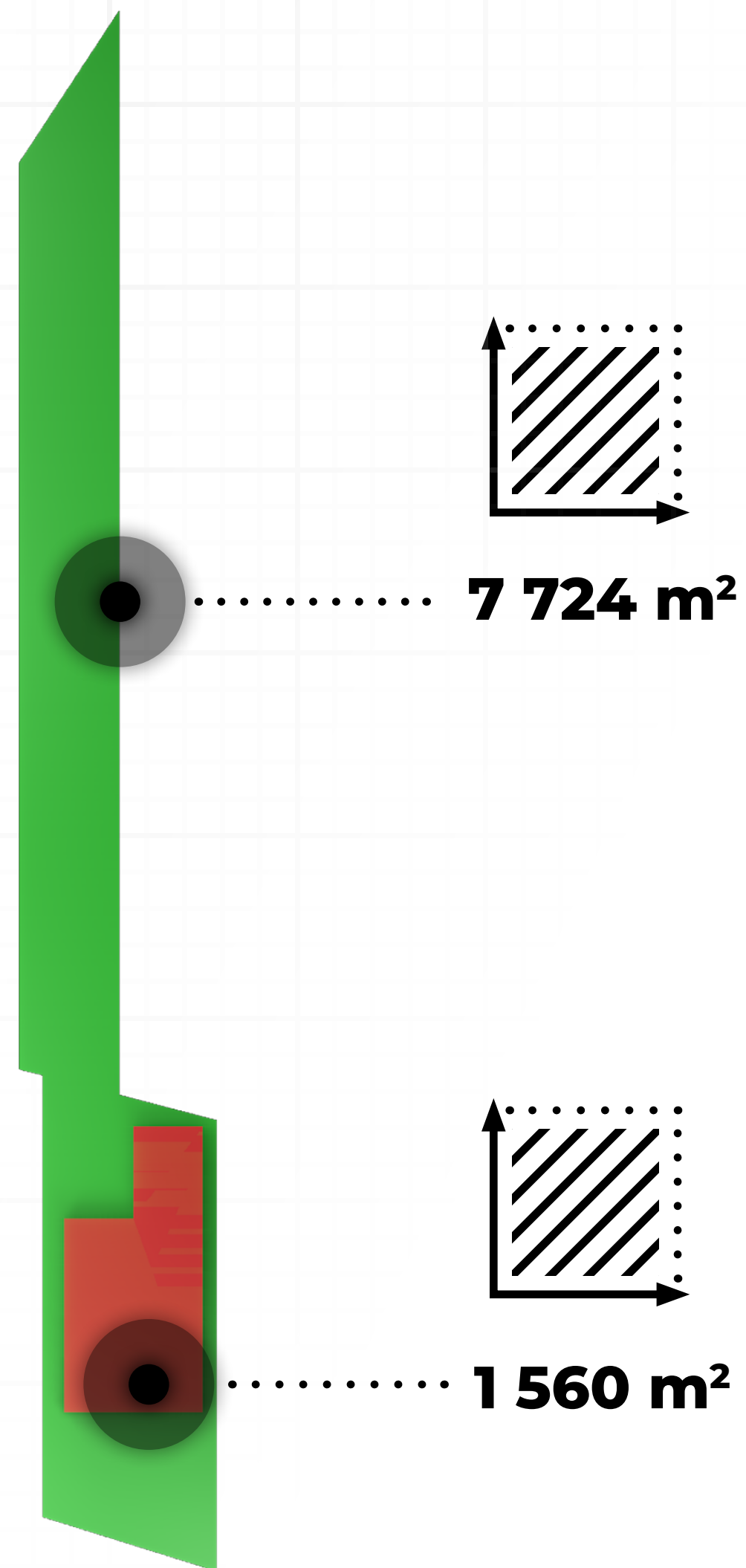
NOVOSTAVBA HALY

Bidovce, p. č. 632/214, 1375/42 k. ú. Bidovce



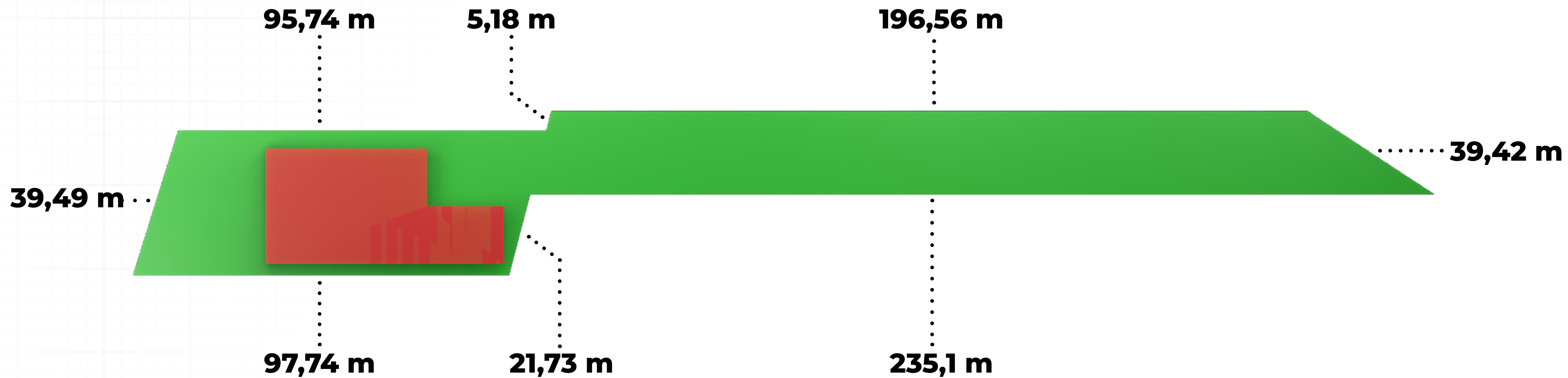
NOVOSTAVBA HALY

Bidovce, p. č. 632/214, 1375/42 k. ú. Bidovce



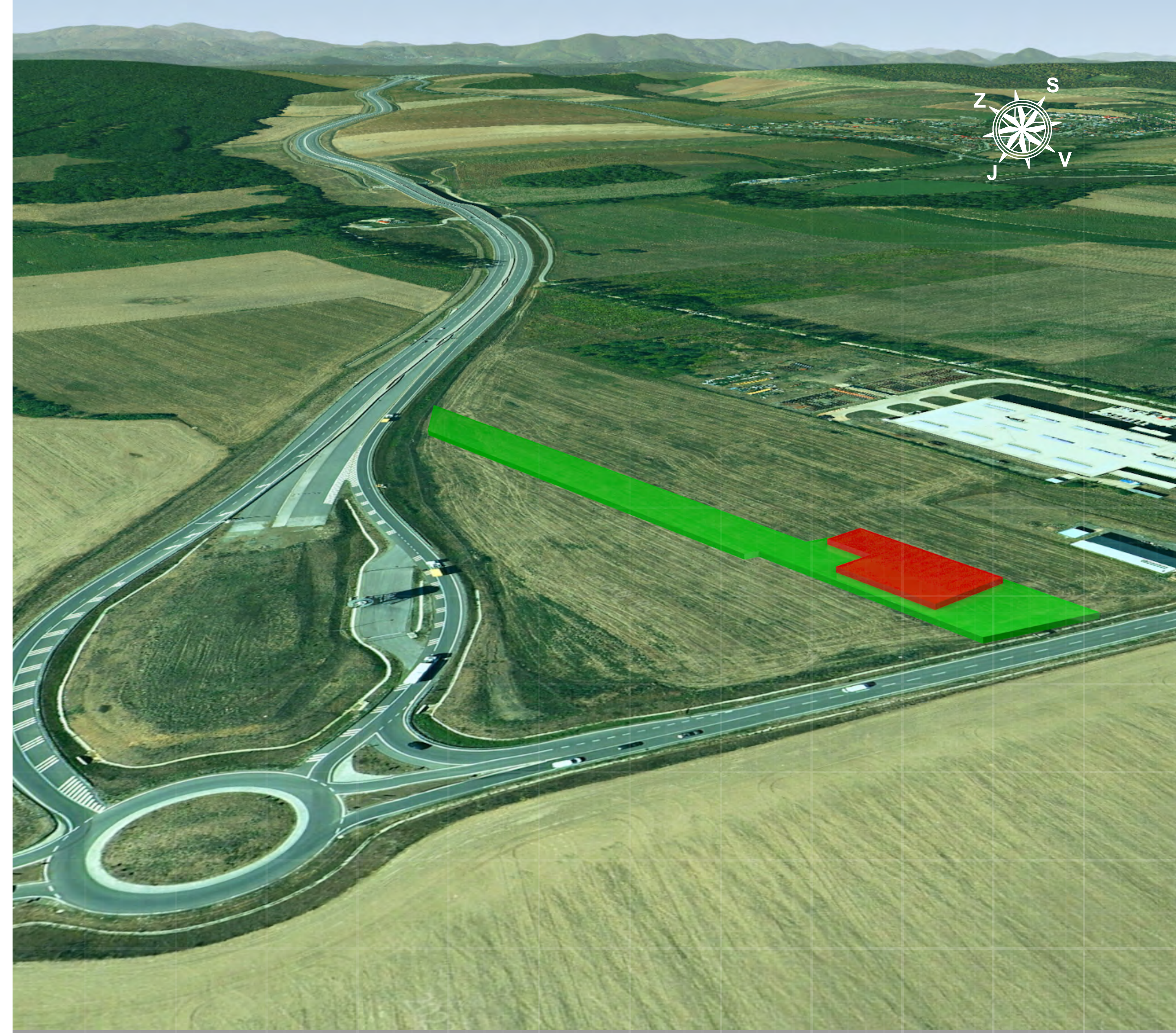
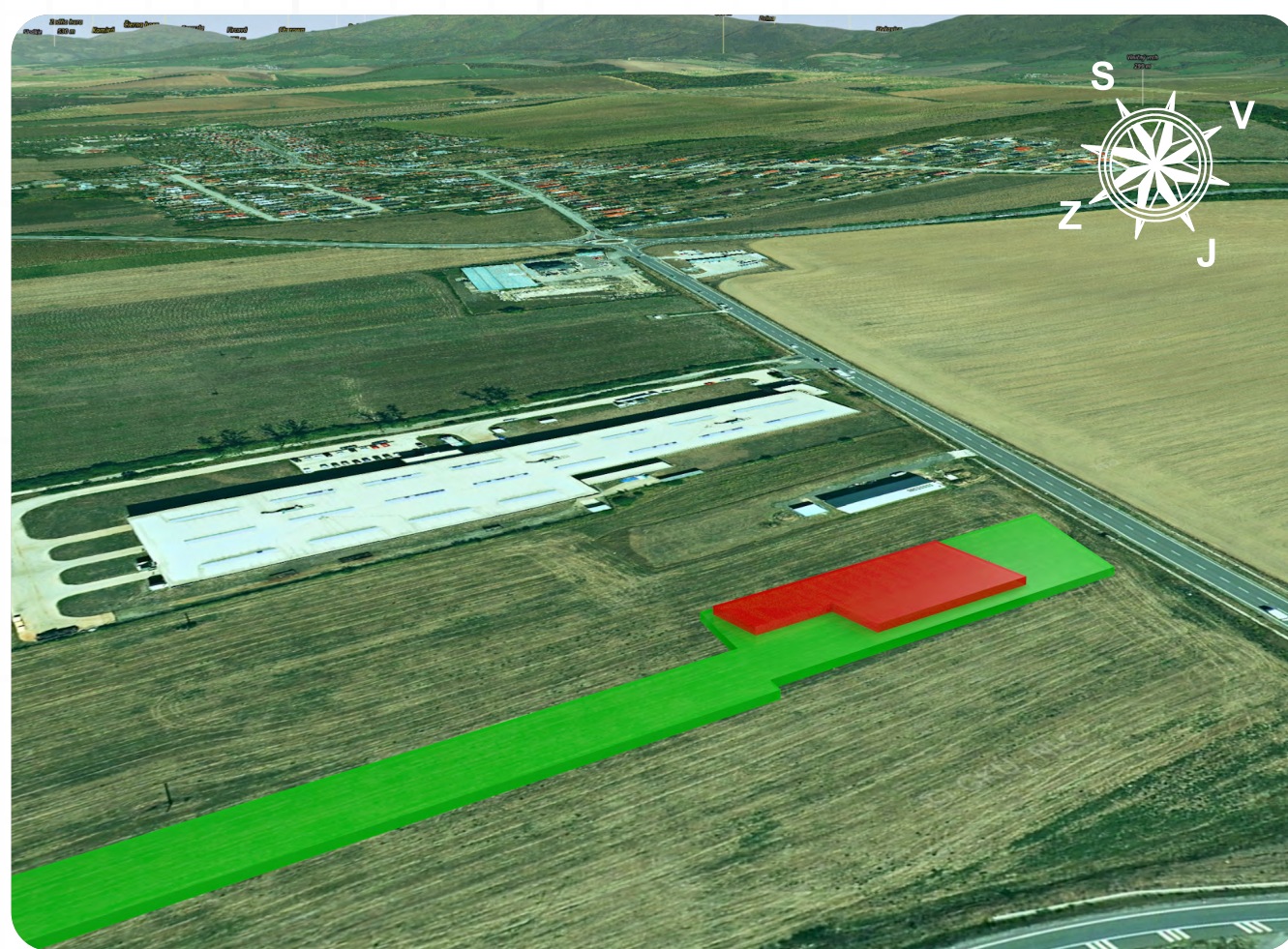
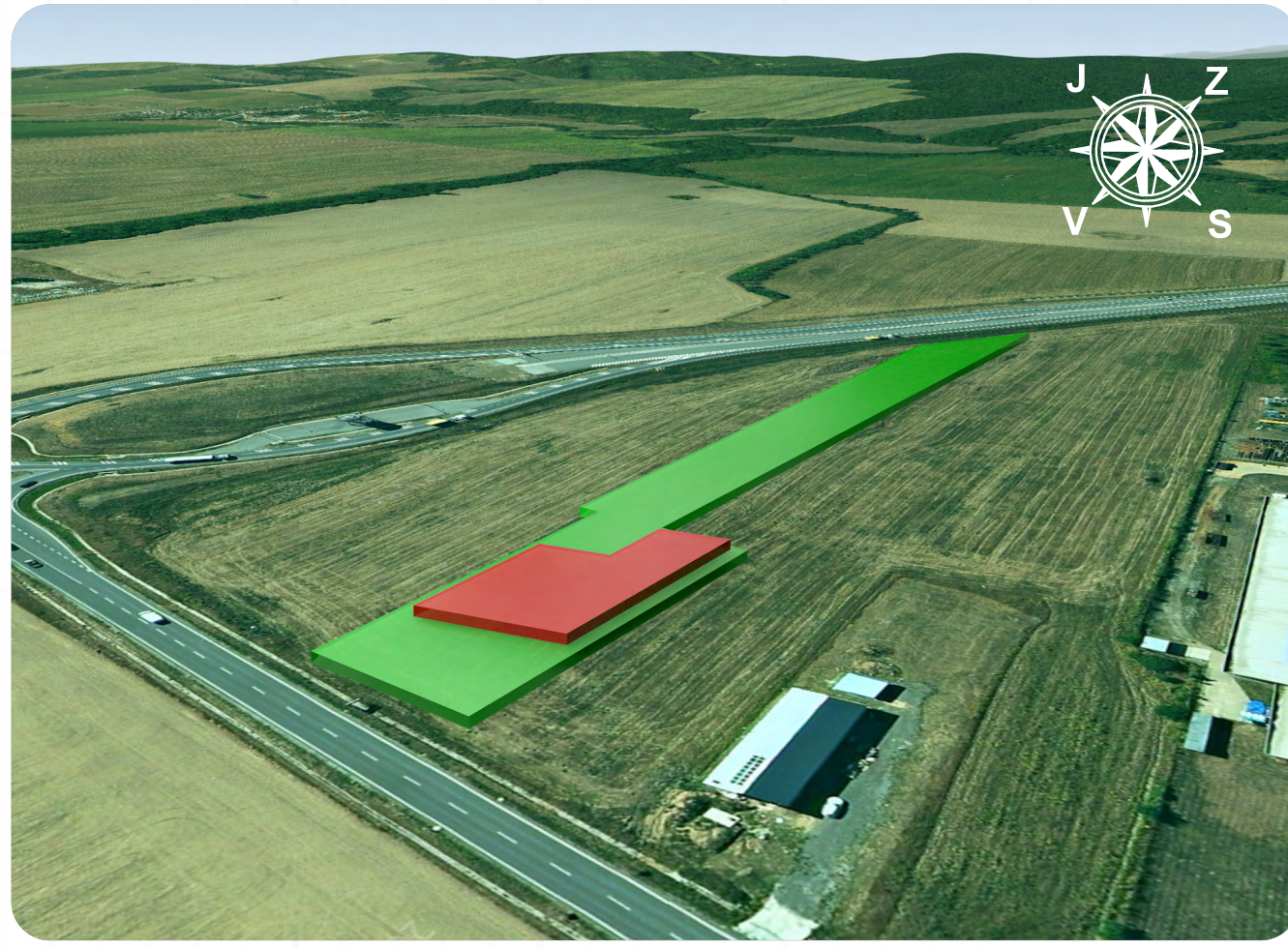
NOVOSTAVBA HALY

Bidovce, p. č. 632/214, 1375/42 k. ú. Bidovce



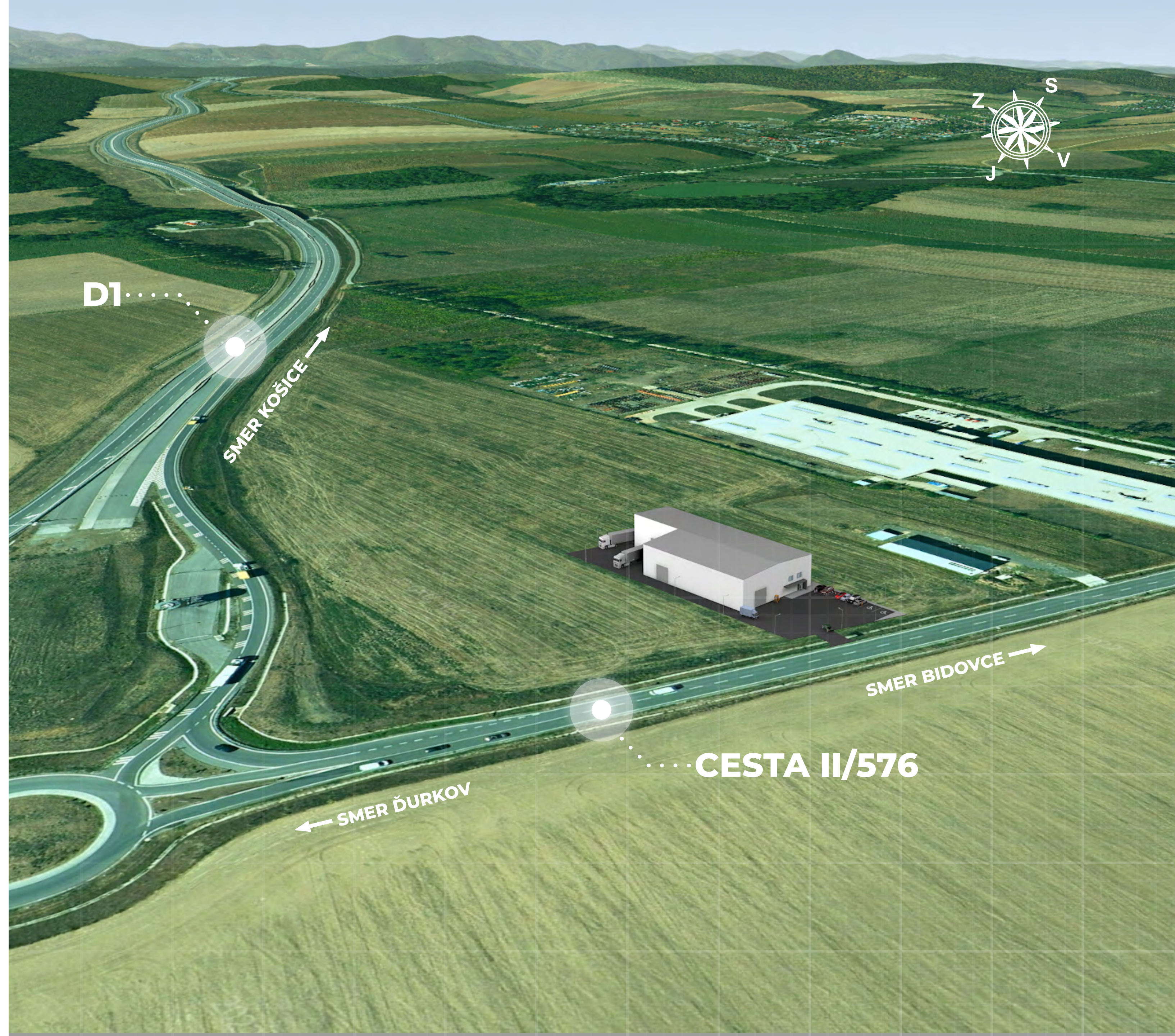
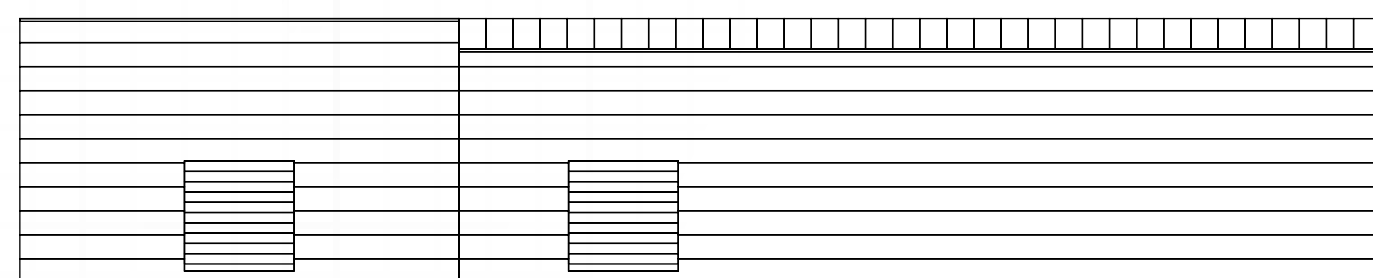
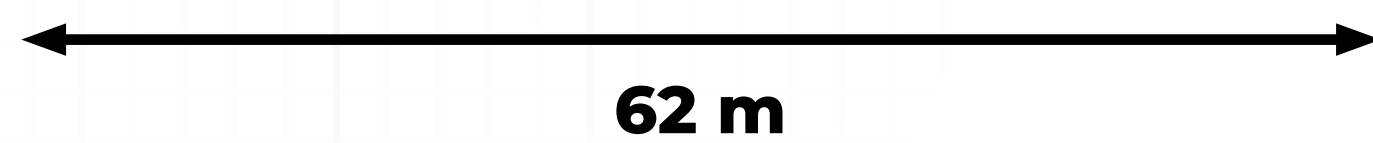
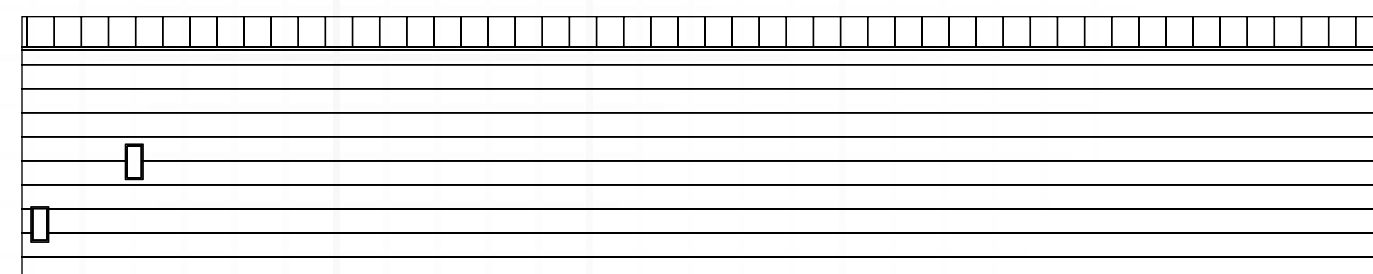
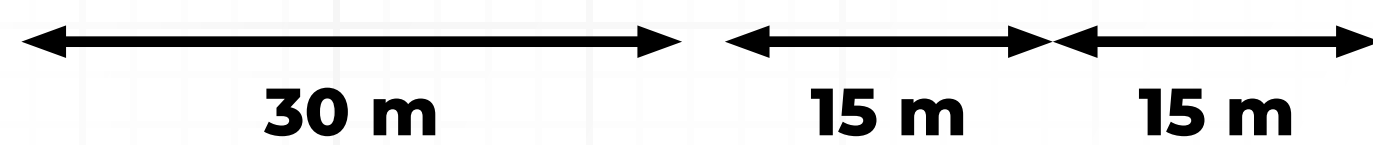
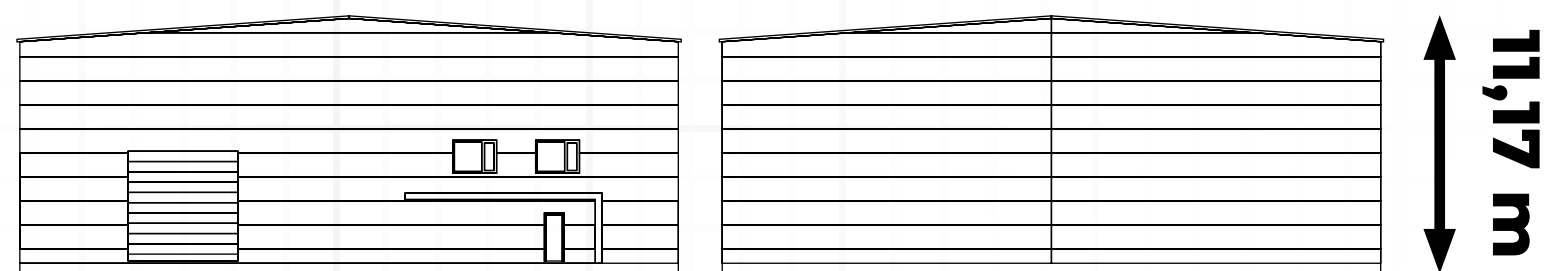
NOVOSTAVBA HALY

Bidovce, p. č. 632/214, 1375/42 k. ú. Bidovce



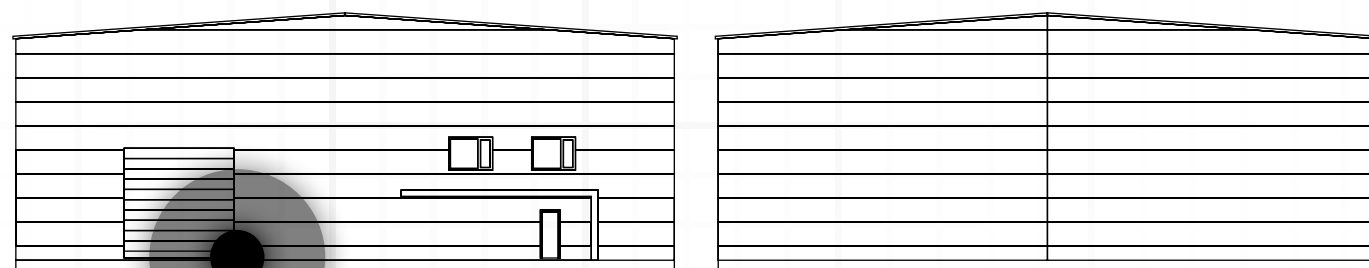
NOVOSTAVBA HALY

Bidovce, p. č. 632/214, 1375/42 k. ú. Bidovce

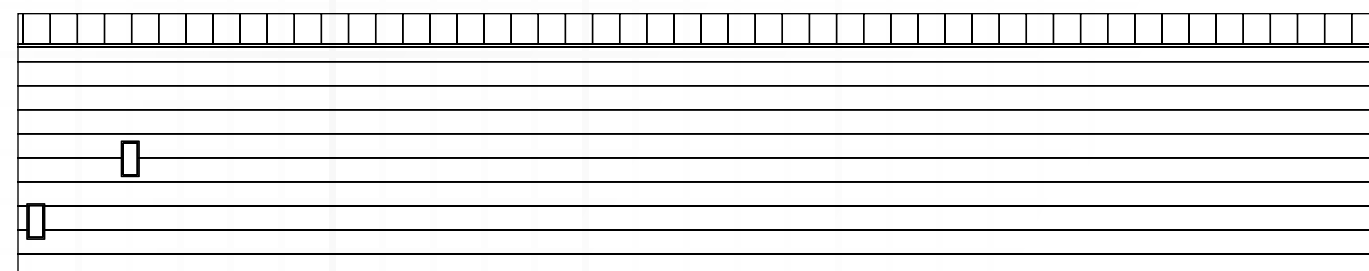


NOVOSTAVBA HALY

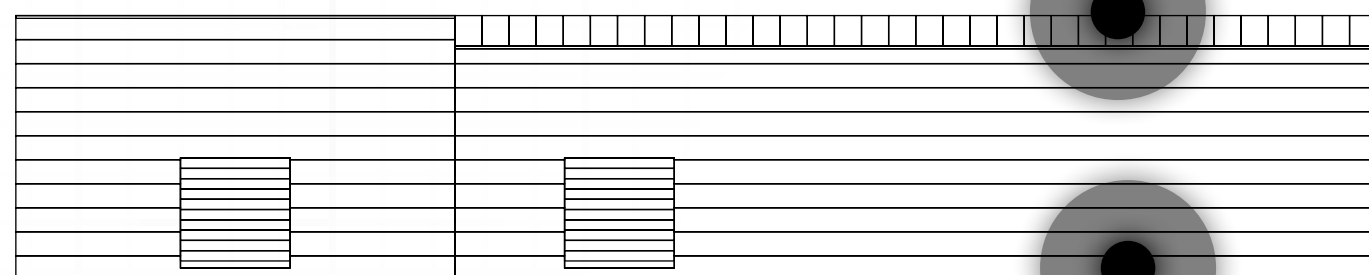
Bidovce, p. č. 632/214, 1375/42 k. ú. Bidovce



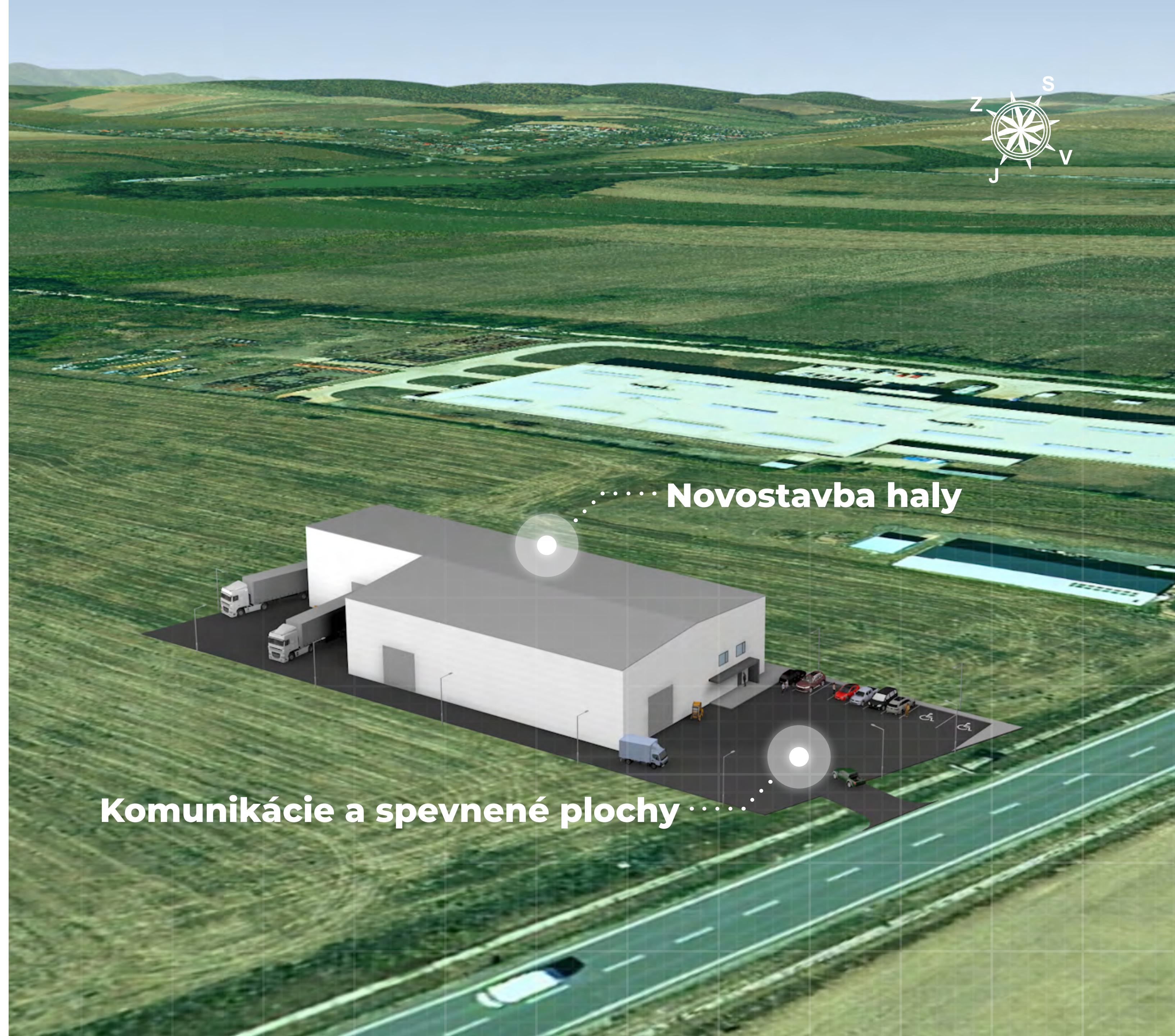
..... **Priemyselná hliníková brána**
(sekciónálna, 2,5 × 5 m, 5 × 5 m)



Strešné sendvičové panely
(MW, hrúbka 120 mm)



Stenové sendvičové panely
(MW, hrúbka 120 mm)

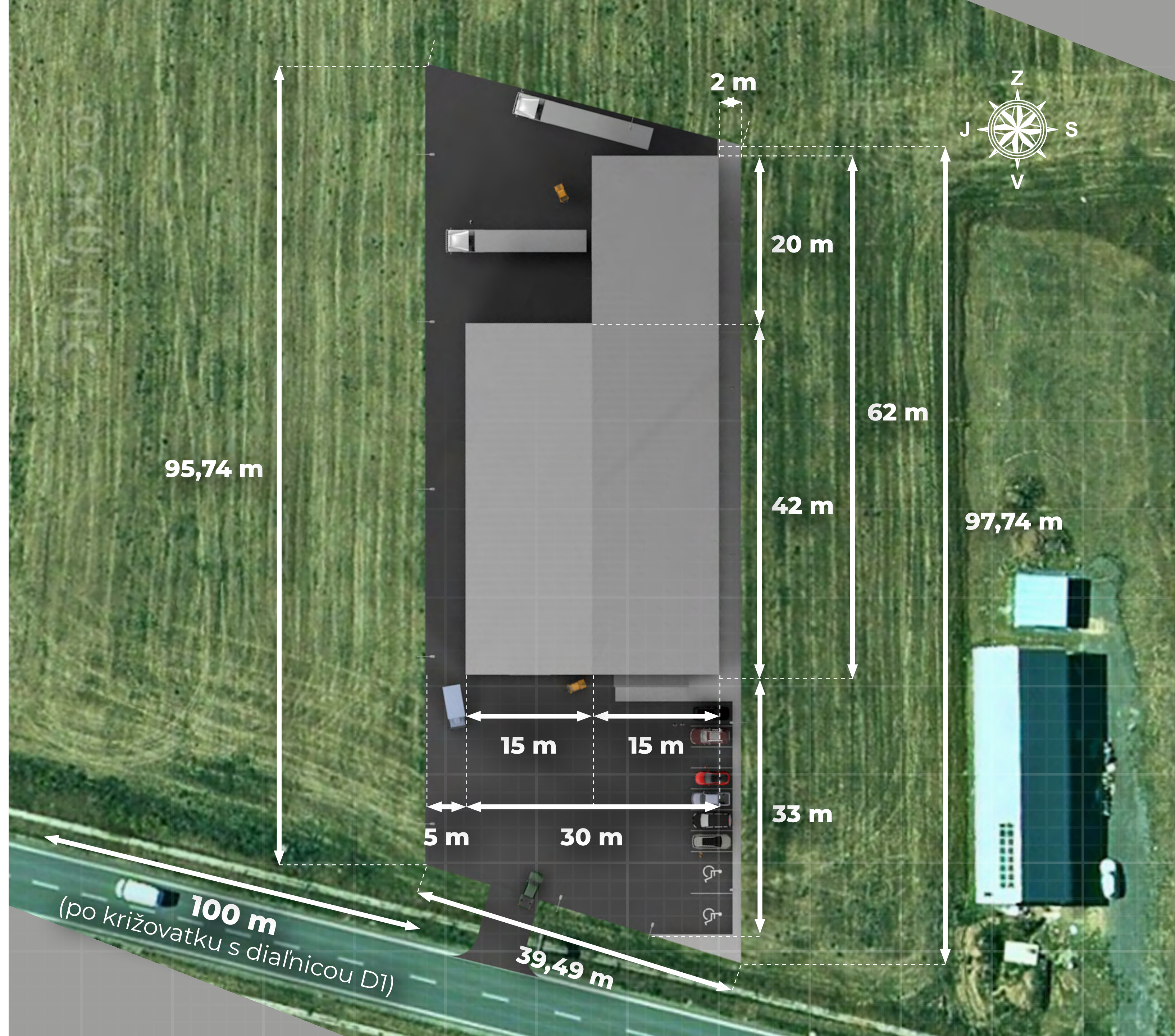
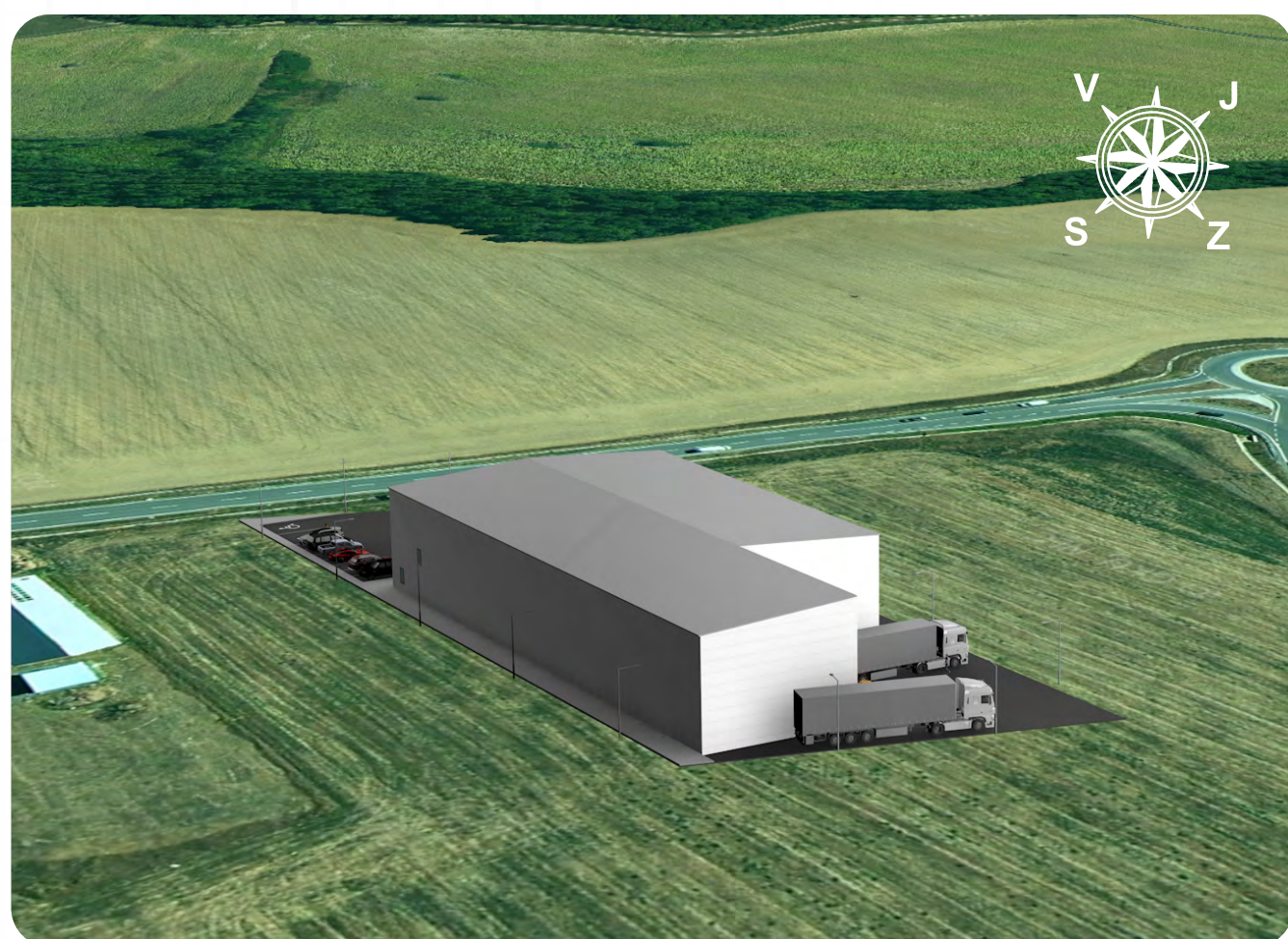
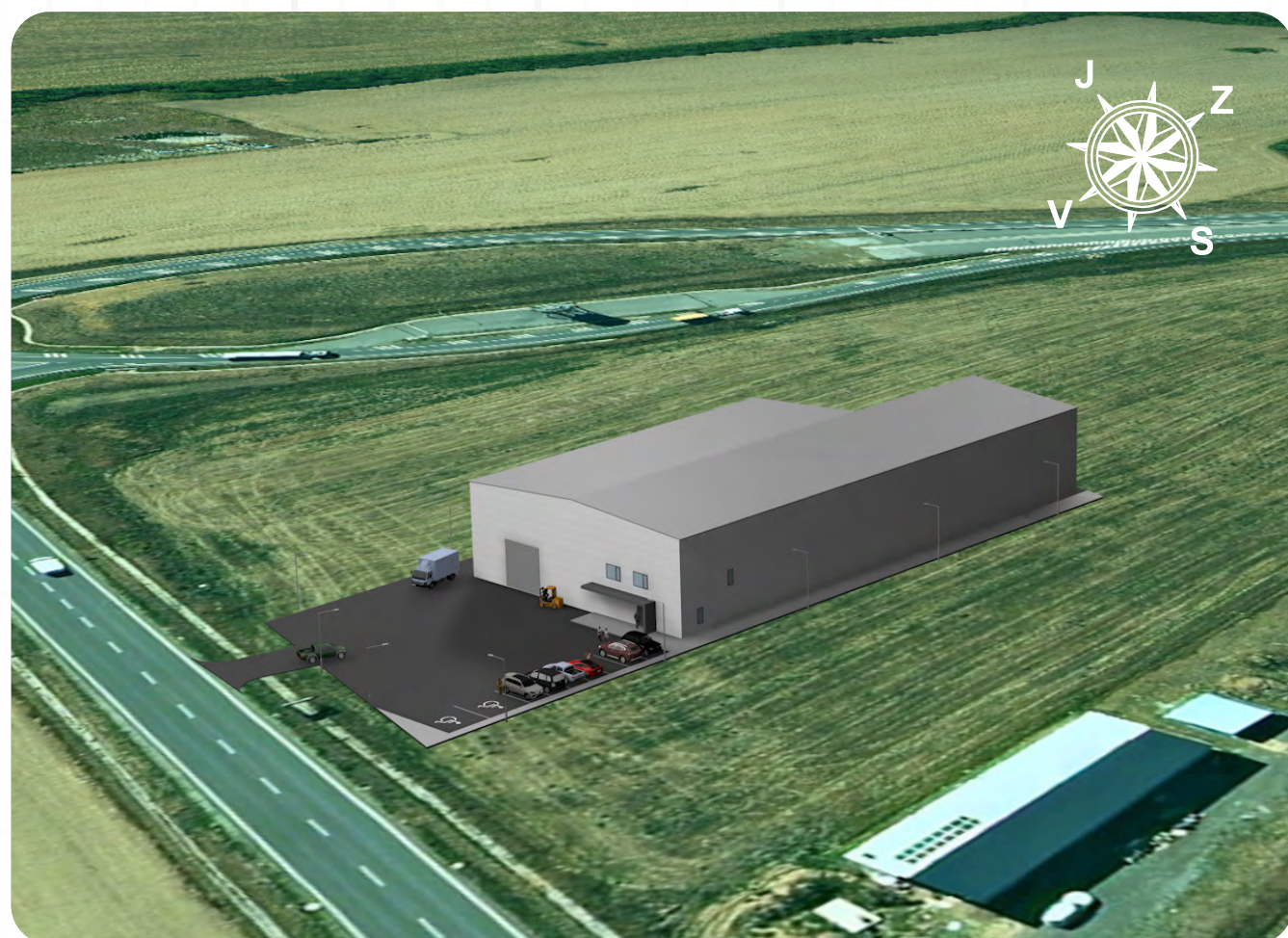


..... **Novostavba haly**

Komunikácie a spevnené plochy

NOVOSTAVBA HALY

Bidovce, p. č. 632/214, 1375/42 k. ú. Bidovce



NOVOSTAVBA HALY

Bidovce, p. č. 632/214, 1375/42 k. ú. Bidovce

